

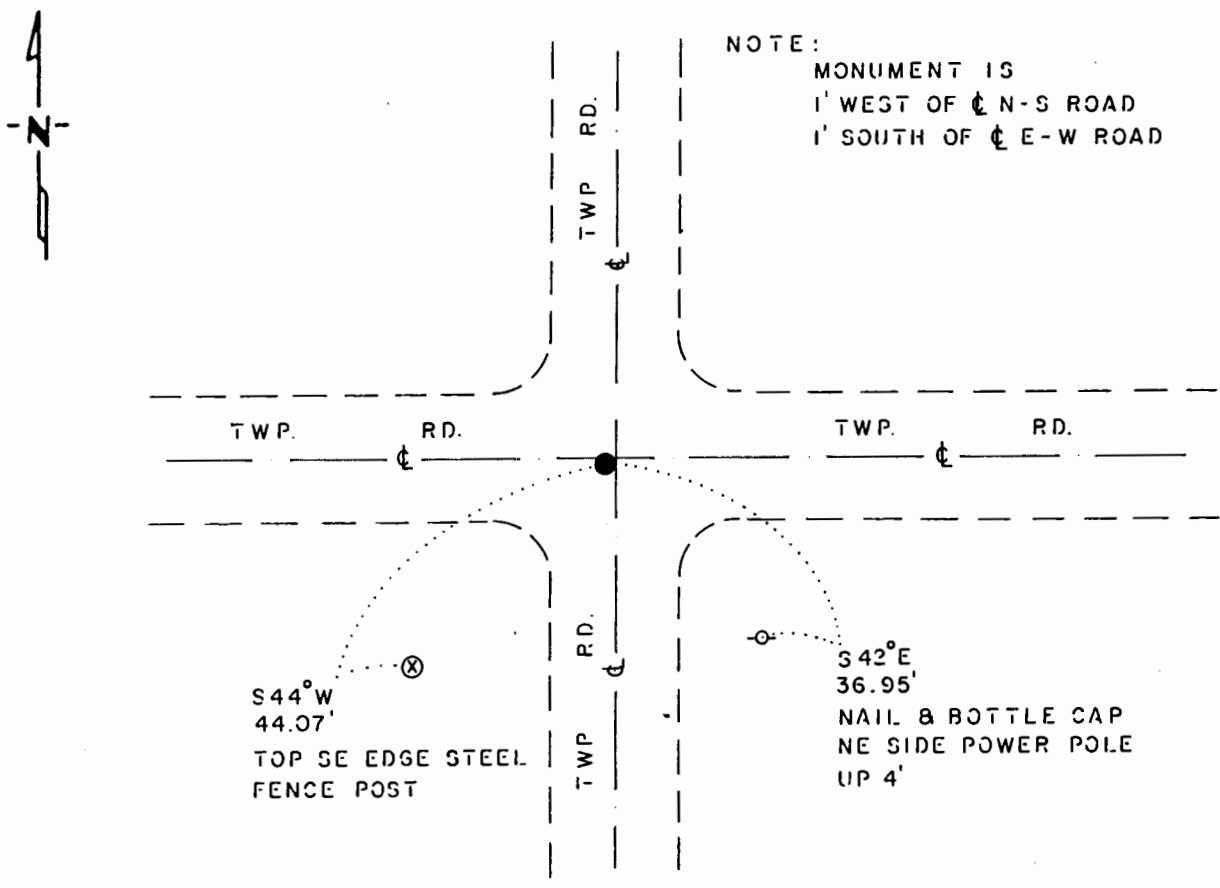
# CERTIFICATE OF LOCATION OF GOVERNMENT CORNER

NORTHEAST Corner of Section 26, Township 107 N., Range 39 W., 5<sup>th</sup> P.M.  
STATE OF MINNESOTA, County of MURRAY

At the corner location shown on the sketch:

- On 3-20-85 found a 1/2" INSIDE DIAMETER CAPPED IRON PIPE  
DATE (R.L.S. #13593), DOWN 6"
- left monument as found,  lowered monument,  removed monument (explain)
- On \_\_\_\_\_ placed a \_\_\_\_\_  
DATE

## SKETCH OF REFERENCE TIES



BEARINGS OBSERVED WITH COMPASS

Statement of evidence relative to this corner location is on back of page.

J.B.M. 10-25-85  
G-1181

I hereby certify that this document and the data contained herein was prepared by me or under my direct supervision.

*Lowell R. Pomeroy* 11-7-85  
SIGNATURE DATE

- Registration No. 17005
- Land Surveyor,  Professional Engineer
  - County Surveyor,  County Engineer

OFFICE OF THE COUNTY RECORDER  
County of \_\_\_\_\_

I hereby certify that this document was filed in the Co. Recorders office at \_\_\_\_\_ M. on the \_\_\_\_\_ day of \_\_\_\_\_ A.D., 19 \_\_\_\_\_

County Recorder \_\_\_\_\_

By \_\_\_\_\_, Deputy

DOCUMENT NO. \_\_\_\_\_

Northeast Corner Section 26, Township 107 North, Range 39 West

This corner was originally established by the U. S. General Land Office survey in 1861. The government notes show corner marked with a wood post set in mound of earth with pits and trench dug around the mound. Also deposited charcoal and planted plum seeds northeast and southwest.

In March 1985, the DNR Bureau of Engineering contacted the following for corner information:

Murray County Offices of the Recorder and Highway Engineer  
Mn/Dot Office in St. Paul  
U.S. Dept. of the Interior, Fish and Wildlife Office in Minneapolis  
Land Surveying Firms:  
Martin Land Surveying of Worthington  
Madsen Land Surveyors of Fairmont  
Sioux Engineering of Windom

The following information was obtained from the County Recorder's Office:

Surveyor's Record Book, on Page 86, contains a survey by J. W. Woolstencraft, County Surveyor, dated June 21, 1899. Survey shows corner:  
2620 feet from the east quarter corner Section 23  
2652 feet from the north quarter corner Section 25  
Survey does not state what was found or set at the corner.

Surveyor's Record Book, on Page 212, contains a survey by J. W. Woolstencraft, County Surveyor, dated October 27, 1909. Survey shows corner:

2640 feet from the north quarter corner Section 26  
2640 feet from the east quarter corner Section 26  
Survey does not state what was found or set at the corner.

Surveyor's Record Book, on Page 289, contains a survey by J. W. Woolstencraft, County Surveyor, dated April 11, 1924. Survey states corner is a stone in grade, small stones on top with fence corner 33 feet north and 33 feet west. Corner is shown:

2652 feet from the north quarter corner Section 25  
2640 feet from the east quarter corner Section 26

The following information was obtained from the County Highway Engineer's Office:

A page from an old tie book states the following about the corner:  
On May 10, 1976 found a mound of stones 1½ feet below road, placed an iron pin above stones and took ties:  
nail and cap, power pole, 36.23 feet southeast  
nail and cap, in post, 51.17 feet, southwest

The following information was obtained from Madsen Land Surveyor's:

In 1981 John Madsen, RLS #13593, found a 6" by 10" stone down 33" with a 3/4" x 24" iron rebar over it and a 3/4" by 7" rebar at the surface. Replaced rebar with an iron pipe with RLS cap #13593.

The following information was obtained from the County Highway Engineer's Office:

A page of a new tie book of government corners shows on August 11, 1981 found a twisted bar with wooden stake over bar 18" below surface. Raised iron bar to a 6" depth and took tie"  
nail and cap power pole, southeast, 111.60 feet

In March 1985, the DNR Bureau of Engineering traversed to the area of the corner and found a 1/2" capped iron pipe with RLS #13593 down 6". Probed under iron pipe and hit a stone down 36 inches. Iron measures:

1 foot west center line north-south road  
1 foot south center line east-west road  
2637.34 feet from the east quarter corner Section 26  
2654.54 feet from the north quarter corner Section 25

Searched for and found record ties as shown.

Accept the iron pipe and stone as the location of the corner.

Traverse information is available from the DNR Bureau of Engineering.

166hab/misou4